

SURFACE PROCESSING

mvt AG offers a comprehensive, economically-priced range of sapphire nozzles for the most varied of applications in the field of surface processing. All of our nozzles consist of a stainless steel nozzle body with a sapphire orifice. Their special design gives them a high degree of stability and safety. Special designs and customer-specific solutions are available on request.

PROPERTIES AND ADVANTAGES

- ▶ Long lifetime
- ▶ Consistent jet quality
- ▶ Precision cutting accuracy
- ▶ Narrow cut width
- ▶ High cutting performance
- ▶ Longer lifetime of focusing tube
- ▶ Excellent price-to-performance ratio
- ▶ Swiss quality

CUSTOMER BENEFITS

- ▶ High productivity
- ▶ Minimal downtime
- ▶ Cost-effective manufacturing
- ▶ High quality standard
- ▶ Expert advice
- ▶ Reliable service

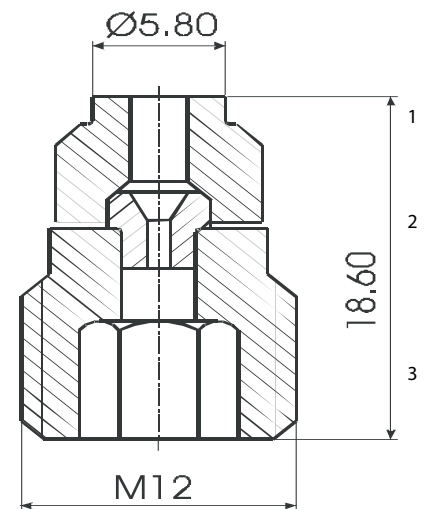
APPLICATIONS

- ▶ Automotive and aircraft industry
- ▶ Construction
- ▶ Mining
- ▶ Chemistry
- ▶ Iron, steel and metal industry
- ▶ Energy
- ▶ Drink
- ▶ Glass, porcelain and ceramics industry
- ▶ Wood industry
- ▶ Local firms
- ▶ Agriculture
- ▶ Machinery and Apparatus
- ▶ Food Processing
- ▶ Offshore Operations
- ▶ Shipbuilding
- ▶ Transportation
- ▶ Pulp and Paper Industry
- ▶ Cement and Concrete Industry

Sapphire screw-in nozzles Type 161 M12

Max. 2500 bar

Joint included



- | | |
|-------------------------------|----------|
| 1. Joint (Stainless steel) | no 10065 |
| 2. Nozzle or blind plug | |
| 3. Assembly screw (stainless) | no 10067 |

PERFORMANCE

Nozzle size in U.S. Gal / min at 40 psi	Nozzles Ød mm	Pressure in bar							
		100	250	500	750	1000	1500	2000	2500
		Density of water							
		kg/m ³	kg/m ³	kg/m ³	kg/m ³	kg/m ³	kg/m ³	kg/m ³	kg/m ³
		1006.427	1011.81875	1020.675	1029.36875	1037.9	1054.475	1070.4	1085.675
		l/min	l/min	l/min	l/min	l/min	l/min	l/min	
0011	0.20	0.244	0.385	0.543	0.662	0.761	0.925	1.060	1.177
0017	0.25	0.382	0.602	0.848	1.034	1.189	1.445	1.656	1.839
0024	0.30	0.550	0.867	1.221	1.489	1.713	2.081	2.385	2.648
0033	0.35	0.749	1.181	1.662	2.027	2.331	2.833	3.246	3.604
0043	0.40	0.978	1.542	2.171	2.648	3.045	3.700	4.240	4.707
0054	0.45	1.238	1.952	2.748	3.351	3.854	4.683	5.367	5.958
0066	0.50	1.528	2.409	3.392	4.137	4.758	5.781	6.625	7.355
0080	0.55	1.849	2.915	4.105	5.006	5.757	6.995	8.017	8.900
0096	0.60	2.200	3.469	4.885	5.958	6.851	8.325	9.541	10.591
0130	0.70	2.995	4.722	6.649	8.109	9.325	11.331	12.986	14.416
0170	0.80	3.911	6.168	8.685	10.591	12.180	14.799	16.961	18.829
0215	0.90	4.950	7.806	10.992	13.405	15.415	18.730	21.466	23.831
0266	1.00	6.111	9.637	13.570	16.549	19.031	23.124	26.502	29.421
0322	1.10	7.395	11.661	16.419	20.024	23.027	27.980	32.067	35.599
0383	1.20	8.800	13.878	19.540	23.831	27.404	33.298	38.162	42.366

INSTRUCTIONS

During manual operation of high-pressure spray guns and lances, which may be included recoil force in the longitudinal axis of the spray device may not exceed 250N!

If the recoil force is 150N, has been working with a body support!

	< 150 N
	< 250 N
	> 250 N