

SURFACE PROCESSING

mvt AG offers a comprehensive, economically-priced range of flat-jet nozzles for the most varied of applications in the field of surface processing.

All of our nozzles consist of a stainless steel nozzle body with a sapphire orifice. Their special design gives them a high degree of stability and safety. Special designs and customer-specific solutions are available on request.

PROPERTIES AND ADVANTAGES

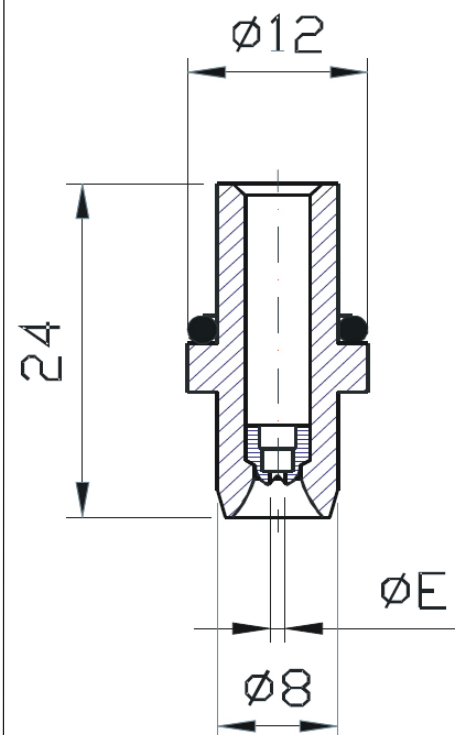
- ▶ Long lifetime, approximately 20 times longer than sapphire nozzles
- ▶ Consistent jet quality
- ▶ Precision cutting accuracy
- ▶ Narrow cut width
- ▶ High cutting performance
- ▶ Longer lifetime of focusing tube
- ▶ Excellent price-to-performance ratio
- ▶ Swiss quality

CUSTOMER BENEFITS

- ▶ High productivity
- ▶ Minimal downtime
- ▶ Cost-effective manufacturing
- ▶ High quality standard
- ▶ Expert advice
- ▶ Reliable service

APPLICATIONS

- ▶ Automotive and aircraft industry
- ▶ Construction
- ▶ Mining
- ▶ Chemistry
- ▶ Iron, steel and metal industry
- ▶ Energy
- ▶ Drink
- ▶ Glass, porcelain and ceramics industry
- ▶ Wood industry
- ▶ Local firms
- ▶ Agriculture
- ▶ Machinery and Apparatus
- ▶ Food Processing
- ▶ Offshore Operations
- ▶ Shipbuilding
- ▶ Transportation
- ▶ Pulp and Paper Industry
- ▶ Cement and Concrete Industry



PERFORMANCE

| Nozzle size in U.S. Gal / min at 40 psi | Nozzles Ød mm | Pressure in bar | | | | | | Spray corner |
|--|------------------|-------------------|-------------------|-------------------|-------------------|-------------------|-------------------|--------------|
| | | 50 | 100 | 200 | 300 | 400 | 500 | |
| | | Density of water | | | | | | |
| | | kg/m ³ | kg/m ³ | kg/m ³ | kg/m ³ | kg/m ³ | kg/m ³ | |
| | | 1004.62 | 1006.43 | 1008.23 | 1010.03 | 1011.82 | 1020.675 | |
| | | l/min | l/min | l/min | l/min | l/min | | |
| 0004 | 0.13 | 0.06 | 0.09 | 0.13 | 0.16 | | | |
| 0007 | 0.18 | 0.12 | 0.18 | 0.25 | 0.30 | | | |
| 0012 | 0.23 | 0.18 | 0.25 | 0.35 | 0.43 | | | 10°-50° |
| 0018 | 0.28 | 0.26 | 0.37 | 0.52 | 0.64 | | | 10°-70° |
| 0025 | 0.33 | 0.40 | 0.57 | 0.80 | 0.98 | | | 10°-80° |
| 0033 | 0.38 | 0.51 | 0.72 | 1.02 | 1.24 | | | 10°-90° |
| 0039 | 0.41 | 0.64 | 0.91 | 1.28 | 1.57 | | | 10°-90° |
| 0043 | 0.43 | 0.70 | 0.98 | 1.39 | 1.70 | | | 10°-90° |
| 0049 | 0.46 | 0.78 | 1.10 | 1.55 | 1.89 | | | 10°-90° |
| 0053 | 0.48 | 0.92 | 1.30 | 1.84 | 2.25 | | | 10°-90° |
| 0065 | 0.53 | 1.08 | 1.52 | 2.15 | 2.62 | 3.03 | | 10°-90° |
| 0078 | 0.58 | 1.30 | 1.83 | 2.59 | 3.16 | 3.65 | | 20°-90° |
| 0092 | 0.63 | 1.50 | 2.13 | 3.00 | 3.67 | 4.23 | | 20°-90° |
| 0107 | 0.68 | 1.77 | 2.50 | 3.53 | 4.32 | 4.98 | | 20°-90° |
| 0123 | 0.73 | 2.08 | 2.95 | 4.16 | 5.08 | 5.86 | | 20°-90° |
| 0140 | 0.78 | 2.42 | 3.42 | 4.82 | 5.89 | 6.79 | | 20°-90° |
| 0163 | 0.84 | 2.69 | 3.80 | 5.36 | 6.55 | 7.55 | | 20°-90° |
| 0183 | 0.89 | 3.04 | 4.30 | 6.07 | 7.42 | 8.55 | | 20°-90° |
| 0204 | 0.94 | 3.61 | 5.10 | 7.20 | 8.80 | 10.15 | | 30°-90° |
| 0226 | 0.99 | 3.89 | 5.50 | 7.77 | 9.50 | 10.94 | | 30°-90° |
| 0250 | 1.04 | 4.35 | 6.15 | 8.68 | 10.61 | 12.24 | 13.66 | 30°-90° |
| 0274 | 1.09 | 4.81 | 6.80 | 9.59 | 11.73 | 13.52 | 15.09 | 30°-90° |
| 0300 | 1.14 | 5.24 | 7.40 | 10.44 | 12.77 | 14.72 | 16.43 | 40°-80° |
| 0327 | 1.19 | 5.62 | 7.94 | 11.21 | 13.70 | 15.79 | 17.63 | 40°-80° |
| 0355 | 1.24 | 6.01 | 8.50 | 12.00 | 14.67 | 16.91 | 18.87 | 40°-80° |
| 0384 | 1.29 | 6.44 | 9.10 | 12.84 | 15.70 | 18.10 | 20.20 | 40°-80° |
| 0421 | 1.35 | 6.94 | 9.80 | 13.83 | 16.91 | 19.50 | 21.76 | 40°-80° |
| 0452 | 1.40 | 7.79 | 11.00 | 15.53 | 18.99 | 21.89 | 24.43 | 40°-50°-60° |
| 0485 | 1.45 | 8.35 | 11.80 | 16.66 | 20.37 | 23.48 | 26.20 | 40°-50°-60° |
| 0519 | 1.50 | 8.84 | 12.50 | 17.64 | 21.57 | 24.86 | 27.74 | 40°-50°-60° |
| 0554 | 1.55 | 9.70 | 13.70 | 19.34 | 23.64 | 27.26 | 30.42 | 40°-50°-60° |

INSTRUCTIONS

During manual operation of high-pressure spray guns and lances, which may be included recoil force in the longitudinal axis of the spray device may not exceed 250N!

< 150 N
 < 250 N

If the recoil force is 150N, has been working with a body support!