

Ceramic nozzle 952-cer



Properties and advantages

- Long lifetime
- Constant jet quality
- High-power and focused water jet
- Needle jet with high energy density
- Easy to install and disassemble
- Swiss Quality

Applications

- Construction industry
- Mining
- Concrete demolition
- Surface treatment

Description

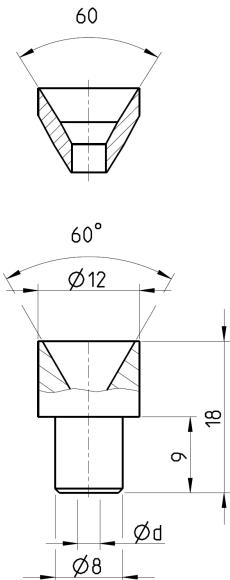
The ceramic nozzle type 952-cer was designed for the hand lance use. The mvt ceramic nozzles have a efficiency factor of 0.95. The advantages come to the fore especially in concrete removal, such as exposing rebars, or in depth removal. **A big advantage is that the ceramicinsert can not burst and also the lifetime is much more higher than sapphire.** Due to its advantageous shape, this nozzle can easily be mounted on all conventional hand lances with an outer cone.

The ceramic insert is completely manufactured by mvt AG, thus ensuring uniform and high quality. All inserts are checked for scratches, cracks and flow.

This product is compatible with the following brands or products.

- Type I

ART. NO. (1)
31632._ _



CHARACTERISTICS	TYPE
	952-CER
Operating pressure (bar)	max. 3000
Operating temp. (°C)	max. 150°

Performance

ART. NO.	NOZZLE SIZE IN US GAL/MIN AT 40 PSI	NOZZLE ØD MM	PRESSURE IN PSI / BAR						
			psi	psi	psi	psi	psi	psi	psi
			14500	21750	25375	29000	31900	36250	43500
			bar	bar	bar	bar	bar	bar	bar
			1000	1500	1750	2000	2200	2500	3000
FLOW RATE IN L/MIN									
31632.0600	0097	0.60	7.074	8.596	9.250	9.852	10.303	10.937	11.901
31632.0650	0114	0.65	8.303	10.088	10.855	11.562	12.092	12.836	13.967
31632.0700	0132	0.70	9.629	11.700	12.590	13.409	14.023	14.886	16.198
31632.0750	0152	0.75	11.054	13.431	14.452	15.393	16.098	17.089	18.595
31632.0800	0173	0.80	12.577	15.282	16.444	17.514	18.316	19.443	21.157
31632.0850	0195	0.85	14.198	17.252	18.563	19.772	20.677	21.950	23.884
31632.0900	0219	0.90	15.917	19.341	20.811	22.166	23.181	24.608	26.777
31632.0950	0244	0.95	17.735	21.550	23.188	24.698	25.829	27.418	29.835
31632.1000	0270	1.00	19.651	23.878	25.693	27.366	28.619	30.380	33.058
31632.1050	0298	1.05	21.665	26.325	28.327	30.171	31.552	33.494	36.446
31632.1100	0327	1.10	23.778	28.892	31.089	33.113	34.629	36.760	40.000
31632.1200	0389	1.20	28.298	34.384	36.998	39.407	41.211	43.747	47.603
31632.1300	0457	1.30	33.211	40.353	43.421	46.248	48.366	51.342	55.867
31632.1400	0530	1.40	38.516	46.800	50.359	53.637	56.093	59.545	64.793

Gasket Sold Separately

ART. NO.	MATERIAL	MAX. PRESSURE (BAR)
10166	Steel Inox	3000

Instructions

When manually operating high pressure guns and lances the repulsive force on the axis should not exceed 250N! If the repulsive force exceeds 150N, a support / body armour is required!

	< 150 N
	< 250 N
	> 250 N